

# Alaska Department of Fish and Game

Habitat Section  
Southeast Region



## 113-51-10040-2005 Tributary 3

## ADDITION

**Water body name:**

**Survey date:** 8/4/2023

**Quad:** Sitka C-4

**Species & Lifestage:**

**Upper Reach Latitude:** 57.549907 **Longitude:** -135.190268

**Survey crew:** CD, NJ

**Lower Reach Latitude:** 57.548571 **Longitude:** -135.187821

**Findings:** We surveyed this uncataloged stream using a backpack electrofisher and GPS and captured juvenile coho salmon and Dolly Varden char. This tributary leads to an old, corrugated metal pipe that has partial blockage at the inlet due to debris build up, but water still flows through. Only resident fish were seen above the pipe. A section of an old second pipe was partially buried in the ground near the stream as well (Table 1; Figures 1–6).

**Recommendations:** Add this uncataloged stream up to waypoint 571 to the anadromous waters catalog for rearing coho salmon (Figure 7).

**Nomination:** Pending

Table 1.—113-51-10040-2005 tributary 3 survey data.

Waypoint	Latitude	Longitude	Notes	Stream Width ft	Stream Substrate	Habitat Features	Gradient %	Sample Effort	Sample Results
570	57.548802	-135.189460	Caught 2 CO on tributary in pool.		Small Gravel Fine Organic		1-2	EF	2 CO
571	57.549870	-135.190263	3 CO and 2 DV caught at outlet of old pipe. Pipe is in rough shape. Approx 20 DV/trout visually seen above pipe in shallow, fine organic water. Inlet of pipe is built up above the bottom of pipe with material but still has room to trickle in water. Upper extent of this tributary seeps out of the ground.		Fine Organic		1-2	EF	3 CO 2 DV



Figure 1. Upstream at waypoint 570.



Figure 2. Downstream at waypoint 570.



Figure 3. Culvert inlet at waypoint 571.



Figure 4. Culvert outlet at waypoint 571.





Figure 5. Old pipe section at waypoint 571.



Figure 6. Juvenile coho salmon caught at waypoint 570.



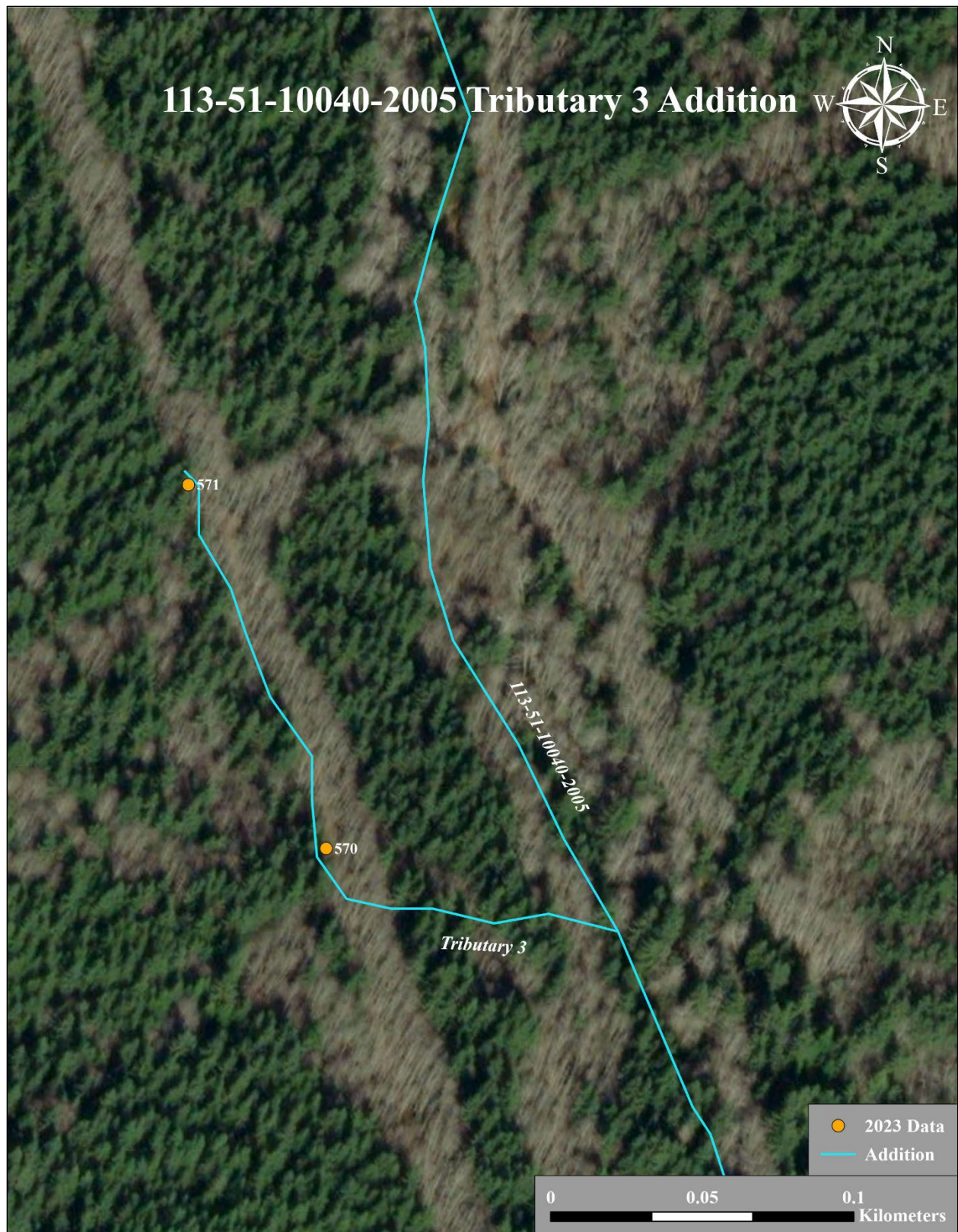


Figure 7. 113-51-10040-2005 Tributary 3 Addition map.